

IN CAMPURELLA

STORNELLO GENOVESE

Testo di C. BARCHI

Musica di L. COLOMBINI

STRUMENTI in DO

Introd. Fisa



Fa

Strofa canto

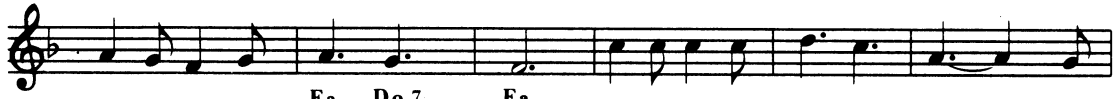


Do 7

Fa



Do 7



Fa Do 7

Fa



Sib



Fa

Do 7



Fa Do 7

Fa

Fa

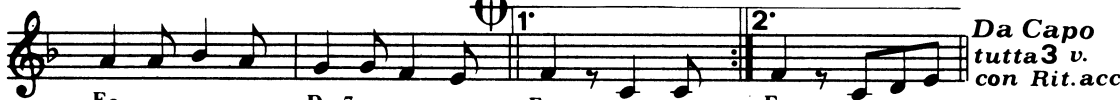


Do 7

Fa



Sib



Fa

Do 7

Fa

Fa

*Da Capo
tutta 3 v.
con Rit. acc.*



Fa

Do 7

Fa